



GMT MONTHLY MEMBERSHIP PROGRESS REPORT

Results as of: 8/31/2019

Multiple District 3233

LOCATION: INDIA

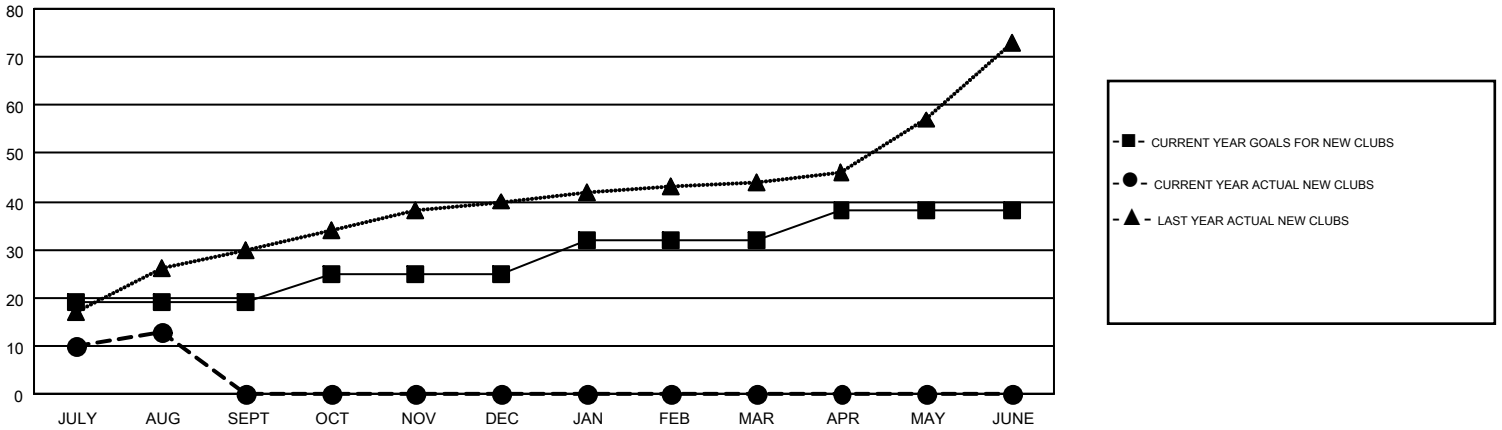
GMT: OPEN

GMT CA 6

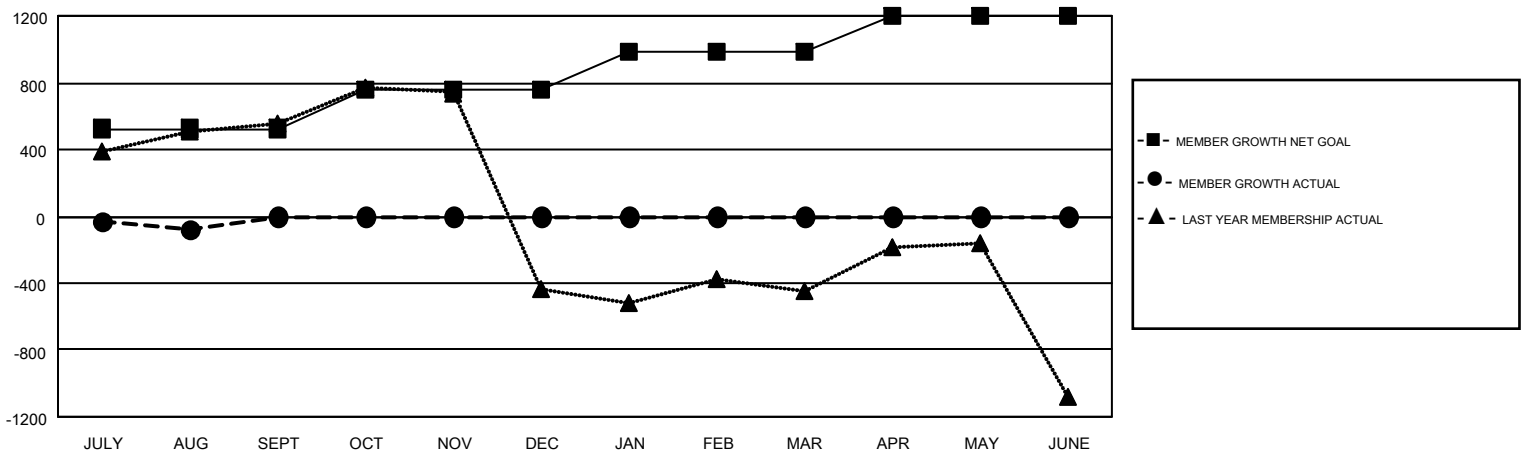
| Clubs | | | |
|-----------------------|---------------|-----------|---------------|
| RESULTS FOR 2019-2020 | | | |
| QUARTER | NEW CLUB GOAL | NEW CLUBS | DROPPED CLUBS |
| JULY/AUG/SEPT | 19 | 13 | 3 |
| OCT/NOV/DEC | 6 | 0 | 0 |
| JAN/FEB/MAR | 7 | 0 | 0 |
| APR/MAY/JUNE | 6 | 0 | 0 |

| Members | | | |
|-----------------------|------------------------|----------------------|--|
| RESULTS FOR 2019-2020 | | | |
| QUARTER | MEMBER GROWTH NET GOAL | MEMBER GROWTH ACTUAL | DROPPED MEMBERS ACTUAL (including transfers) |
| JULY/AUG/SEPT | 525 | 528 | 557 |
| OCT/NOV/DEC | 230 | 0 | 0 |
| JAN/FEB/MAR | 235 | 0 | 0 |
| APR/MAY/JUNE | 210 | 0 | 0 |

GOALS AND ACTUAL NEW CLUBS CUMULATIVE



GOALS AND ACTUAL MEMBERS CUMULATIVE



| | | |
|------------------------|---|---------------------------------------|
| DROPPED CLUBS: 3 | 84 CLUBS OF 659 ADDED 1 OR MORE NEW MEMBERS | <u>GENDER DISTRIBUTION</u> |
| | | MALE 15,232 (68.81%) |
| | | FEMALE 6,905 (31.19%) |
| <u>DROPPED MEMBERS</u> | CLICK HERE FOR CUMULATIVE MEMBERSHIP DATA | TOTAL FAMILY UNIT MEMBERS 8,657 |
| DECEASED 8 | | FAMILY MEMBERS PAYING HALF DUES 4,923 |
| CLUB CANCELLED 125 | | |
| OTHER 424 | | |
| TOTAL 557 | | |